

S . N . O
portfolio

GRADUATE LANDSCAPE ARCHITECT
DESIGN- STORYTELLING- ILLUSTRATION

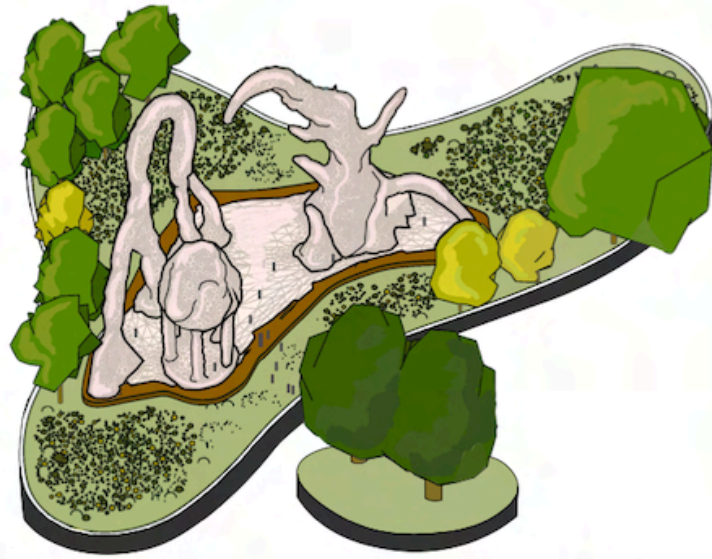
“Look Up “
A1 Coloured Pencil

Conceptual
advertisement
for the London Cloud
Watching Society

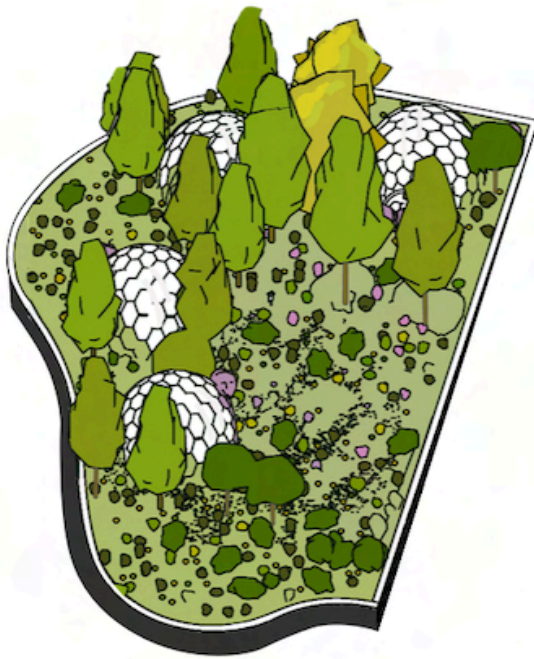


"Melting Landscape"
*Physical Beeswax Model 3D scanned
to Rhino, Enscape, then Photoshop*

Art Installation at Jubilee Gardens
representing the climate crisis
through an interactive beeswax
structure melts with increasing
extreme temperatures and changes
with human touch



Closer axonometric view of the bees wax structure in zone 2



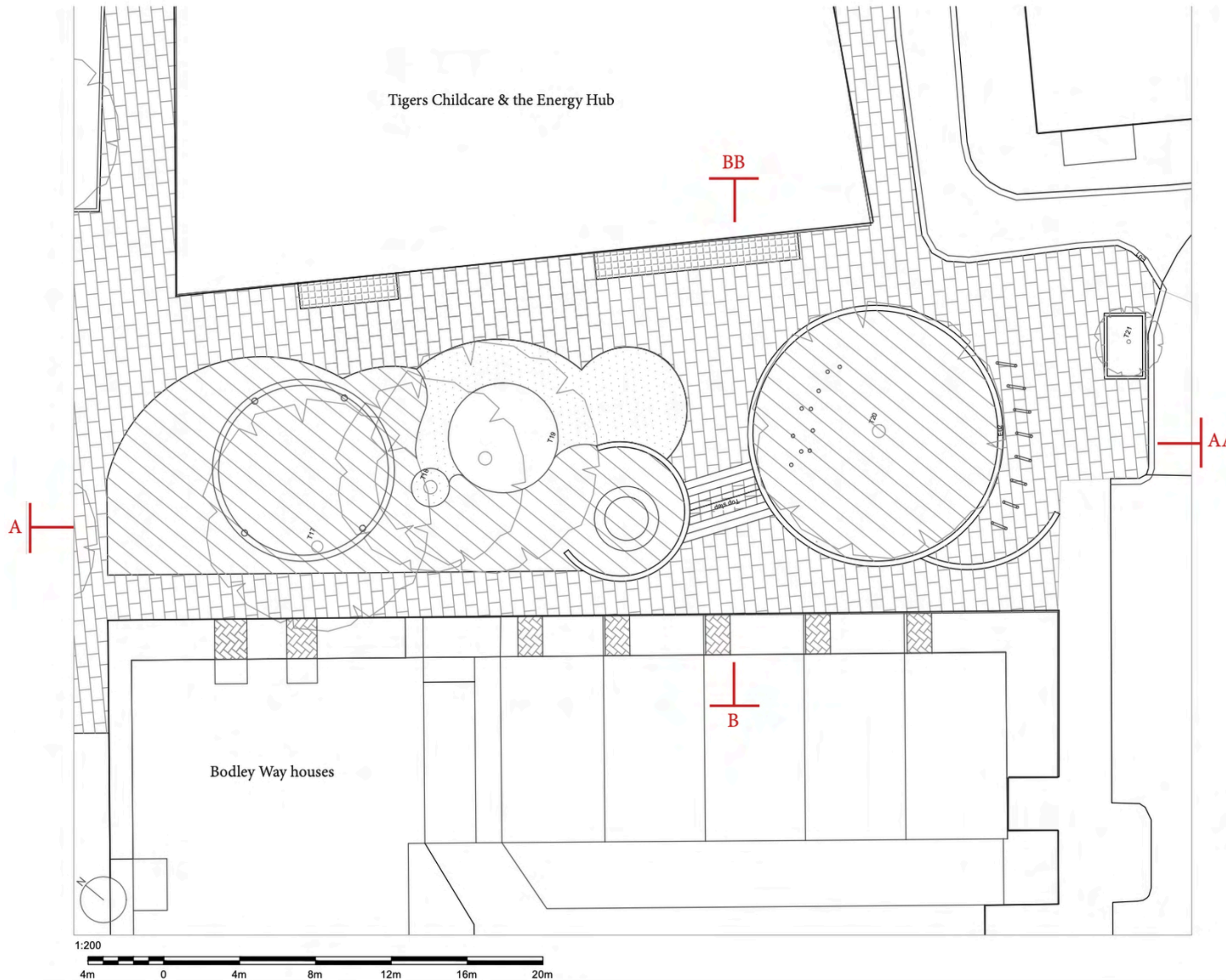
Closer axonometric view of the bee domes in zone 1



"Pollinator Triad"

Physical Beeswax Model 3D scanned to Rhino, Grasshopper, Enscape, Illustrator

A three part Installation at Jubilee Gardens.
One- an interactive art installation made of beeswax.
Two- Hexagonal Glass domes to safely observe the bee life cycle.
Three- Open trails encircling bee hotels and pollinator habitats that are so desperately needed.



Key

Dutch Clay Pavers
Size: 200x50x65mm
Colour: Dark Red
Laying Pattern: Stretcher

EDPM
Made of Virgin Rubber
Colour: Tan

Tiger Mulch
Made of recycled tires
Colour: Multicolour

Granite Flag Paving
Size: 750x600x80mm
Colour: Silver Grey
Finish: Flamed
Laying Pattern: Stretcher

Granite Set Paving
Size: 80x80x80mm
Colour: Silver
Finish: Flamed
Laying Pattern: Stack

Kerbs and Edging

E01
Granite Kerb
Size: 300x225x1000mm
Colour: Silver
Finish: Flamed

E02
Prefabricated Concrete
with Aggregate Kerb
Size: 10x2.9x70mm
Colour: Cream
Precast Wall Units

Project No.
ENVT 1100

Project Name
Elephant Park

Sydney Olszewski

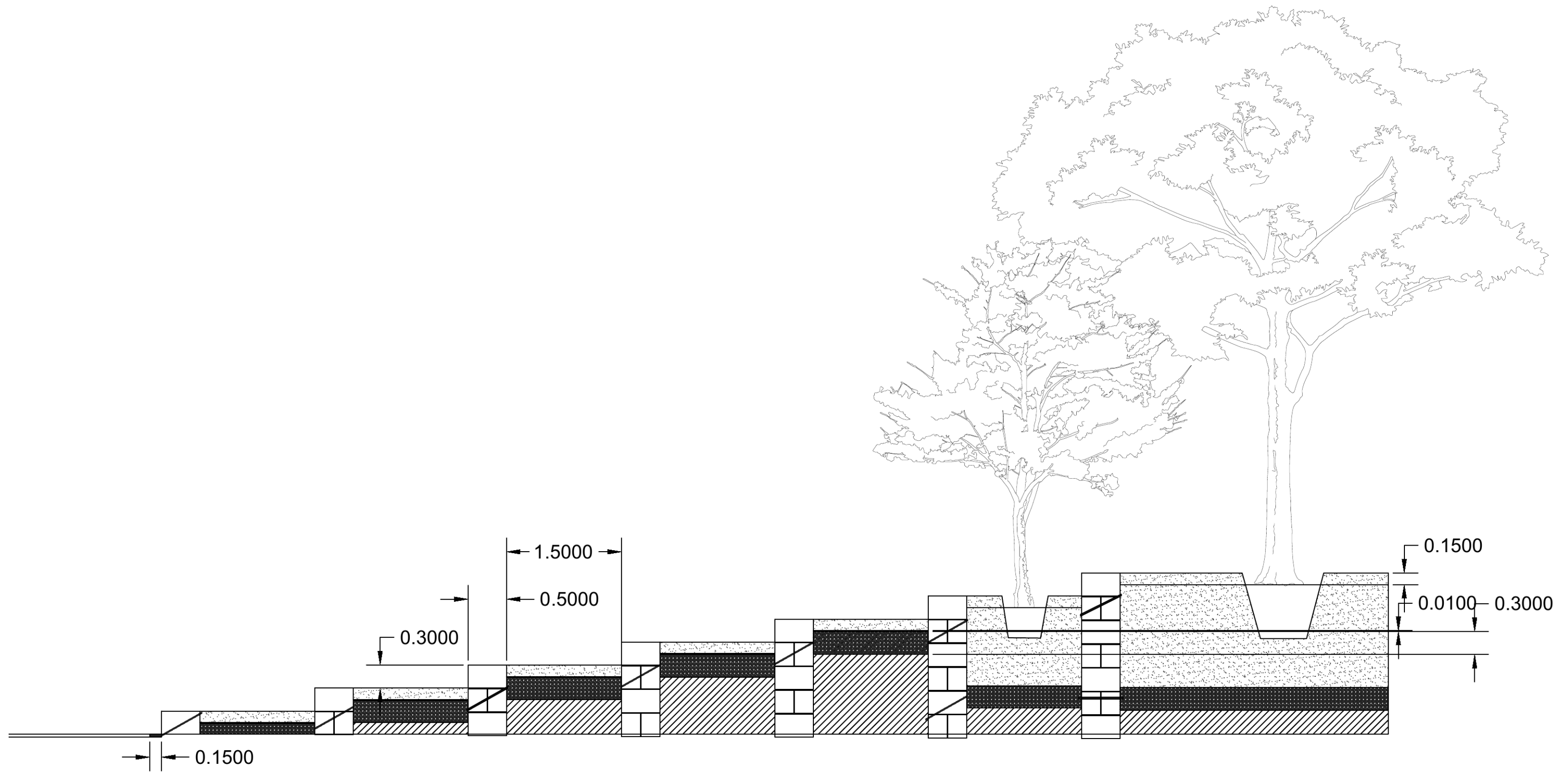
Hard Landscape Plan

1:200@A3

"Elephant Park Detail"

AutoCAD

Hard Landscape Survey with level
changes, intersecting curves and edges

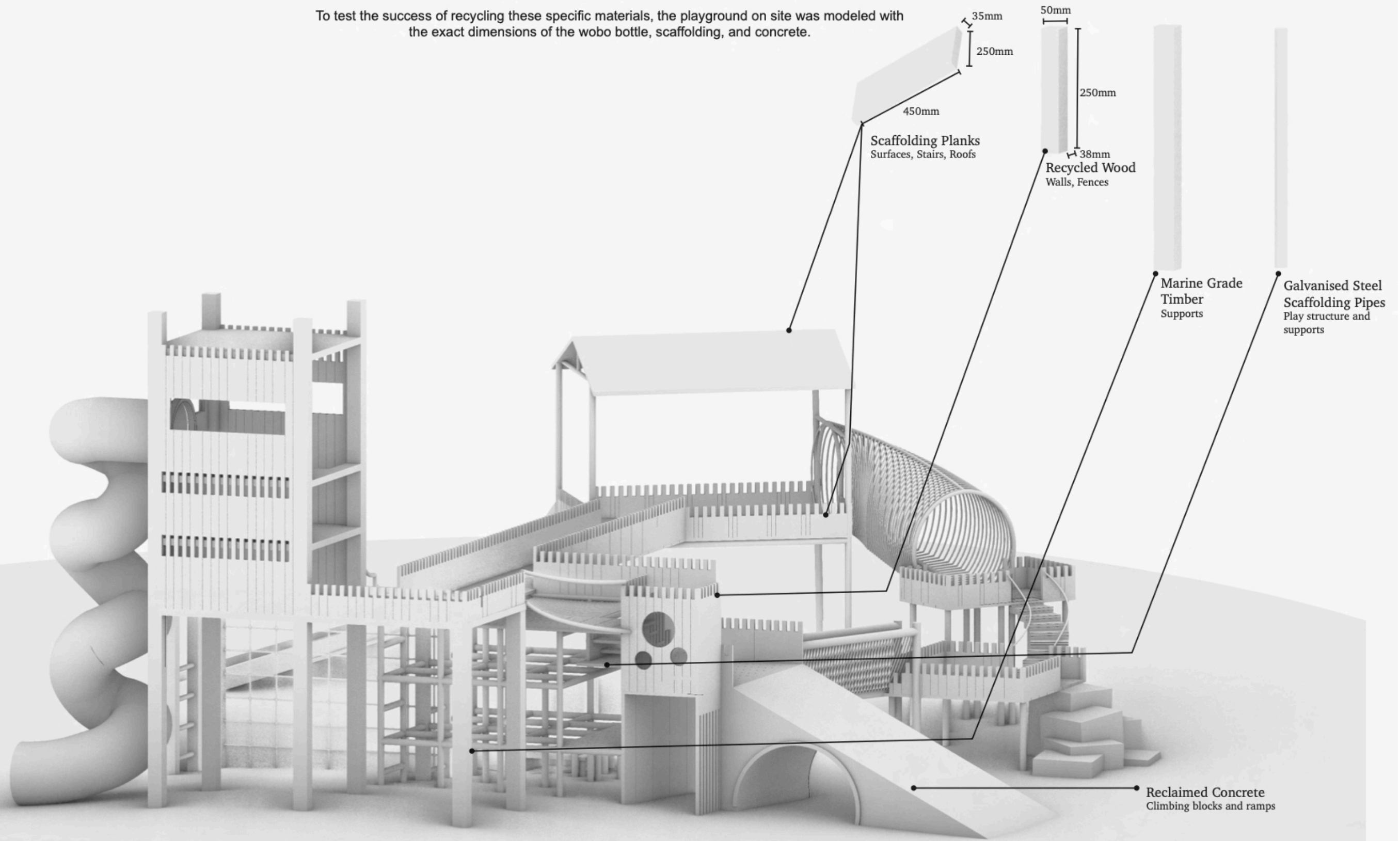


"Amphitheatre Section"
AutoCAD

Amphitheatre section to demonstrate
drainage, substrate layers, and tree pits

WOULD RECYCLING WORK?

To test the success of recycling these specific materials, the playground on site was modeled with the exact dimensions of the wobo bottle, scaffolding, and concrete.



"Recycled Materials Playscape"
Rhino

Proof of concept for using recycled materials along the Greenwich River Frontage

Children's Memory Map

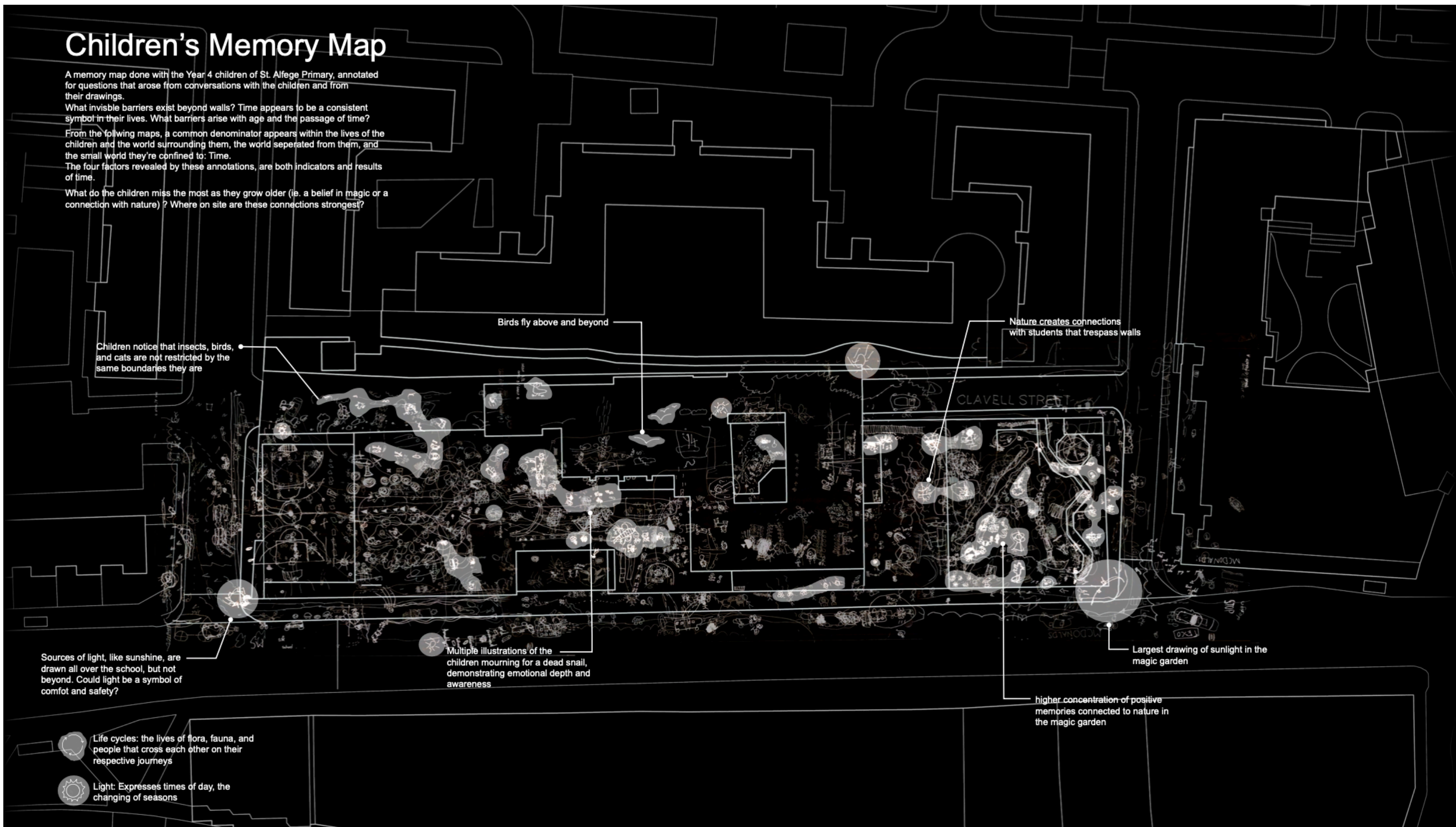
A memory map done with the Year 4 children of St. Alfege Primary, annotated for questions that arose from conversations with the children and from their drawings.

What invisible barriers exist beyond walls? Time appears to be a consistent symbol in their lives. What barriers arise with age and the passage of time?

From the following maps, a common denominator appears within the lives of the children and the world surrounding them, the world separated from them, and the small world they're confined to: Time.

The four factors revealed by these annotations, are both indicators and results of time.

What do the children miss the most as they grow older (ie. a belief in magic or a connection with nature)? Where on site are these connections strongest?



"Children's Memory Map"
Children's illustrations analysed through Photoshop

Community engagement workshop done on site with local primary school, understanding the needs of children in design

Vision and Manifesto

The aim of the design is to harmoise the Greenwich River frontage.

The anti-social behavior that exists in frequent pockets along the site, not only makes the space unsafe for a wide range of users but creates an atmosphere of unwelcome. This sense of distrust and disengagement feeds on itself, fueling more ASB. Furthermore, patchworks of materials, frequently locked access to ecology and the riverfront, and high fences contribute to the overall message: This space is not for you.

To combat this narrative, new interventions will be designed through 10 safety criteria. Firstly, through requirements that can be applied at a large scale:

Designated Space- Welcoming- Multi-use- Connected- Interaction with nature

Secondly, through principles that can be integrated on a smaller scale:

Visible- Personal Investment- Sanitary- Safety Technologies- Traversable

To harmonise the character of the site, materials will be consistent and flow between typologies of space. Boundaries such as fences and gates should fade into the landscape without interrupting user experience. A series of bridges will wind through new and existing ecological corridors creating opportunities for human connection to nature, even at high tide. To encourage water quality improvement, a combination of floating islands and wetlands will- potentially create opportunities for outdoor recreation, tourist attractions, and greater visibility of ASB priority areas. Finally, smaller scale interventions should encourage local community investment, treating ASB at its source.

Overall, by combating in anti-social behaviour along and around the Greenwich River frontage, the design aims not only to harmoise the space, but improve user experience.

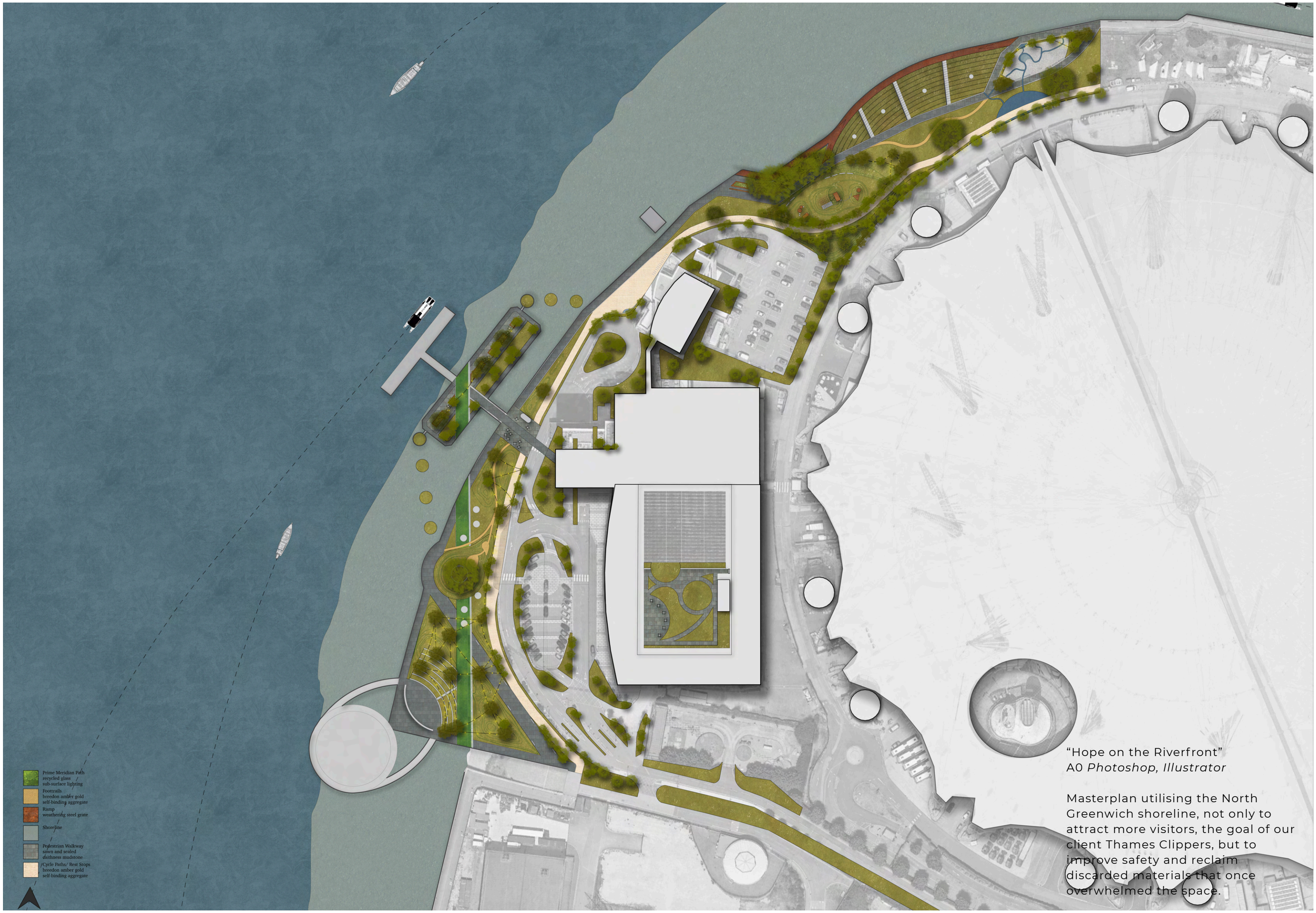


“Broken Glass”
AI Hand illustration + photoshop/
illustrator

Visual representation of the issue of
Anti-social behaviour and violent
crime along the Greenwich River
Frontage

1-2500 A0



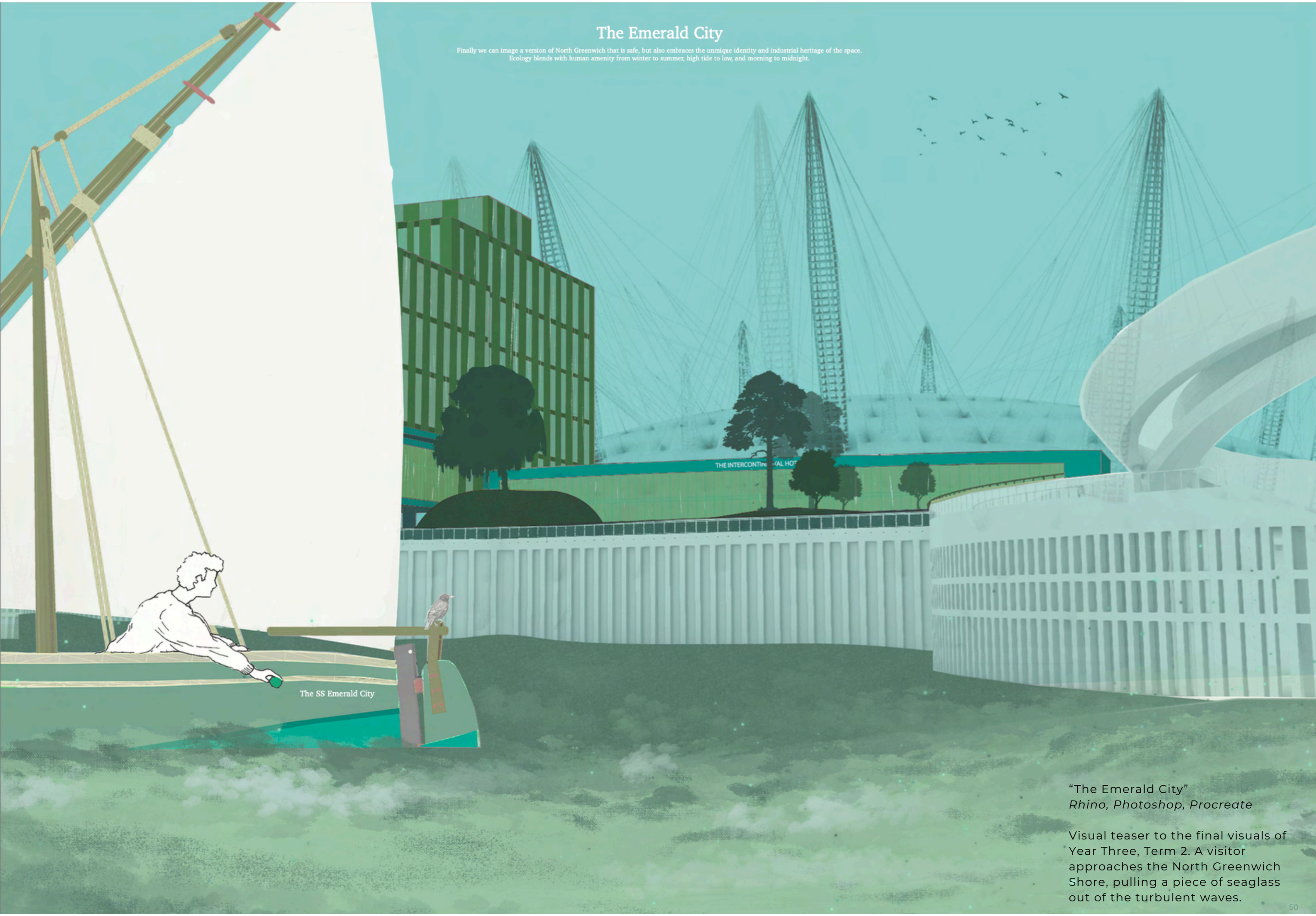


"Hope on the Riverfront"
A0 Photoshop, Illustrator

Masterplan utilising the North Greenwich shoreline, not only to attract more visitors, the goal of our client Thames Clippers, but to improve safety and reclaim discarded materials that once overwhelmed the space.

The Emerald City

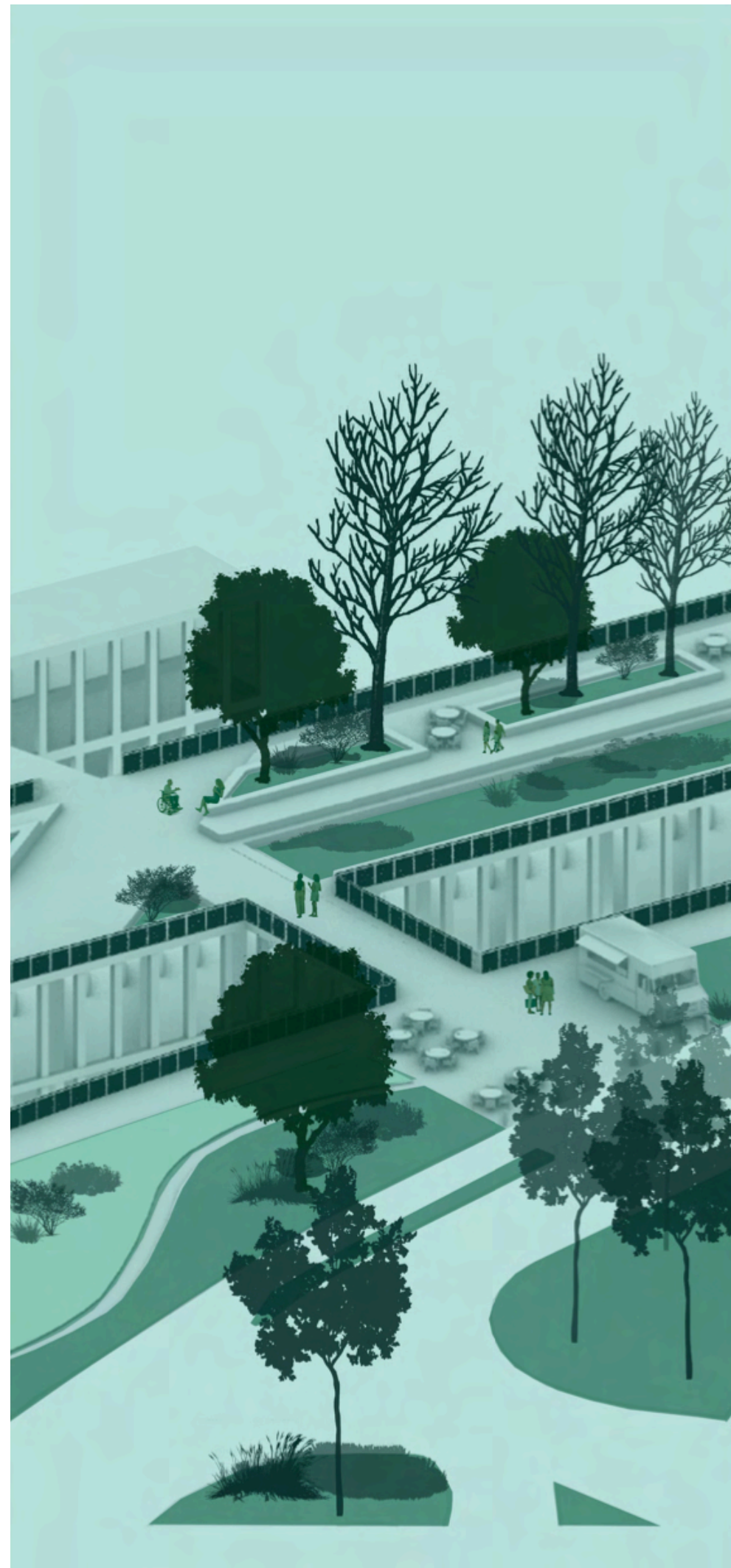
Finally we can image a version of North Greenwich that is safe, but also embraces the unnnique identity and industrial heritage of the space. Ecology blends with human amenity from winter to summer, high tide to low, and morning to midnight.



The SS Emerald City

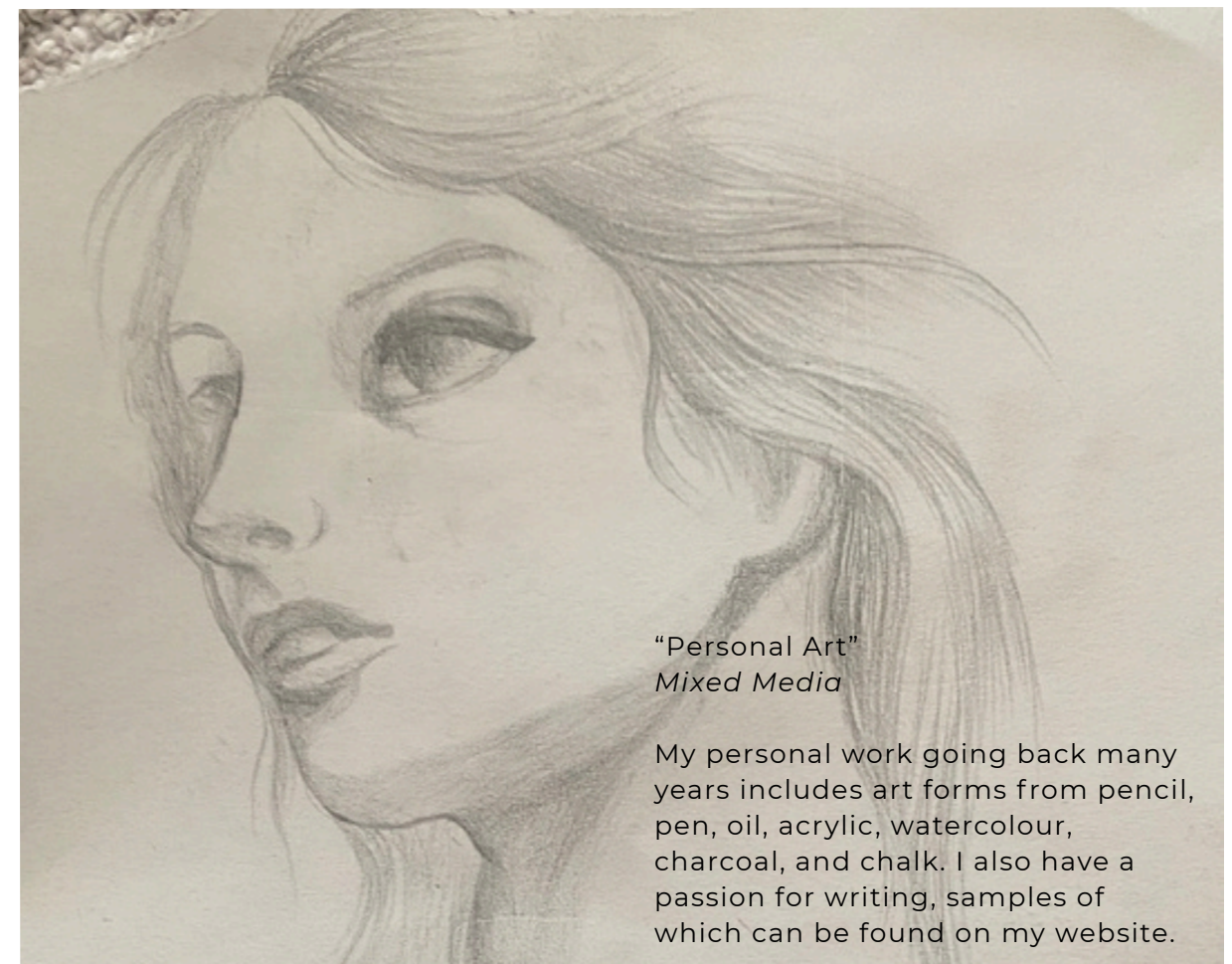
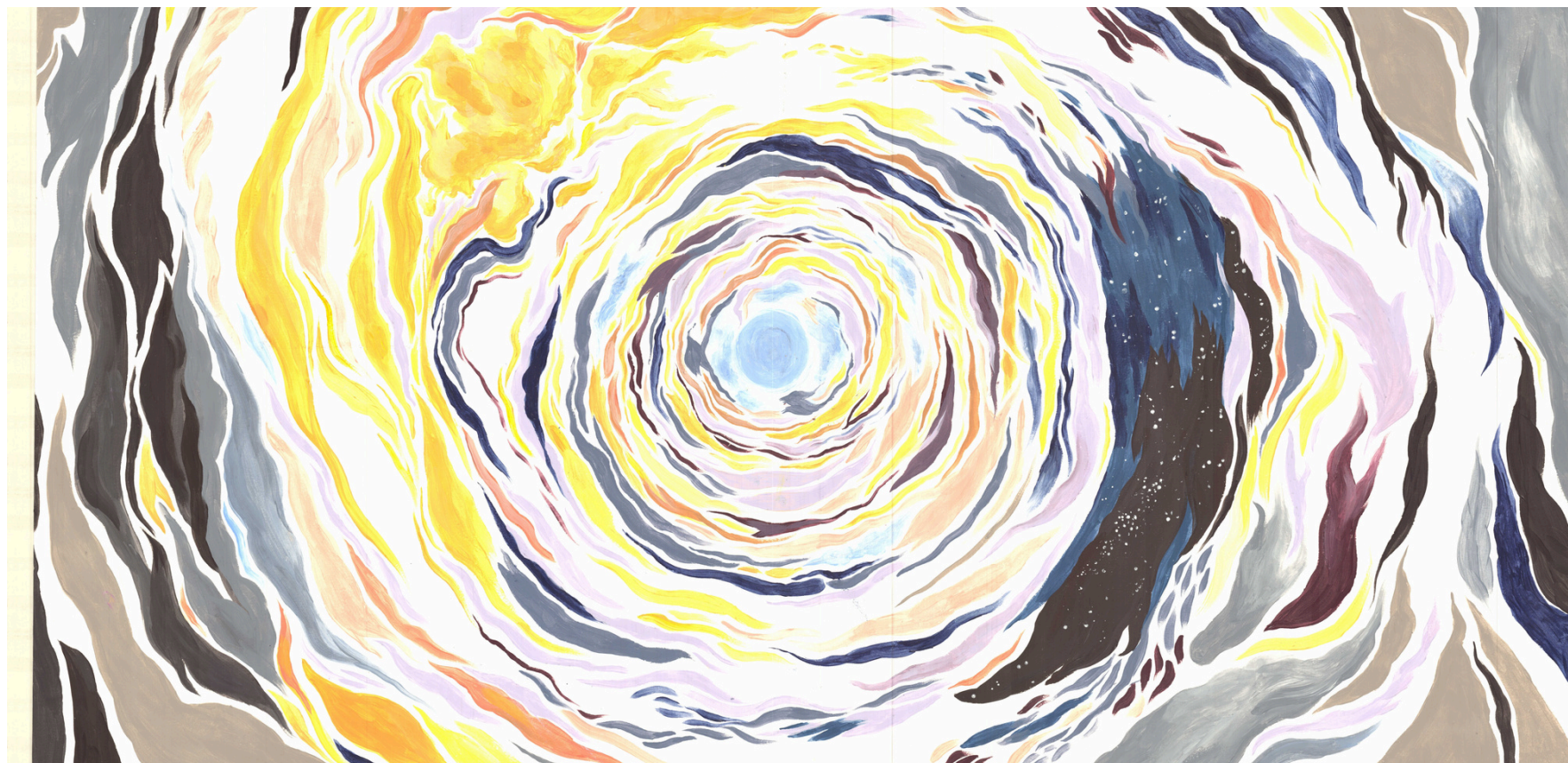
“The Emerald City”
Rhino, Photoshop, Procreate

Visual teaser to the final visuals of Year Three, Term 2. A visitor approaches the North Greenwich Shore, pulling a piece of seaglass out of the turbulent waves.



“Trio of Views”
Rhino, Photoshop

Visual teaser to the final visuals of Year Three, Term 2. A visitor approaches the North Greenwich Shore, pulling a piece of seaglass out of the turbulent waves.



"Personal Art"
Mixed Media

My personal work going back many years includes art forms from pencil, pen, oil, acrylic, watercolour, charcoal, and chalk. I also have a passion for writing, samples of which can be found on my website.

SYDNEY OLSZEWSKI

Graduate Landscape Architect



WEBSITE:
<https://olszewskisydneyo.wixsite.com/sydney-olszewski>

EMAIL:
snodesigns701@gmail.com

LINKEDIN:
Sydney Olszewski

PROFILE

I am a landscape architecture student, moving by myself to London at 18 to pursue my passion. I have a strong affinity for ecology, as well as community engagement and writing. My best assets are my curiosity, enthusiasm, and ability to keep a positive attitude under pressure.

WORK EXPERIENCE

TEACHER

SuDS Workshop, London

March 2025

- Co-lead SuDs/ Intro to Landscape Architecture Workshop at a local London sixth form

COMMUNITY ENGAGEMENT

St Alfege Primary School, London

November 2023 + March 2024

- Lead children's workshops to better understand how to design for their needs

VOLUNTEER GARDENER

Westcombe Woodlands

March 2025

- Community tree planting to revitalise historic Greenwich woodlands

VOLUNTEER GARDENER

Trees for Cities

October 2023

- Deptford Primary School Garden revitalisation

GARDEN MANAGER, CO-FOUNDER

Bee Sustainable, London

September 2022- September 2023

- Small business start-up creating beeswax products working with local beekeepers
- Creating and managing gardens for pollinator habitat creation
- Leading classes for local primary schools
- Marketing, social media engagement, product design

PLANT CARETAKING, CASHIER

Cornelius Plant Nursery, Houston

February 2021- March 2022

- Year-round outdoor and indoor plant-care in an challenging climate

FOOD SERVICE, RETAIL, TRAPPING, ETC.

Various Part Time Work

June 2019- December 2023

- Extensive experience in high pressure environments with a variety of people

EDUCATION

University of Greenwich

2022- 2025

BA Hons Landscape Architecture with First

AWARDS + ACOLADES

- Graduated 2025 with Awards: Best Dissertation, Best Studio, Best Overall
- University of Greenwich End of Year Show Awards 2024
- ENACTUS grant winner for start-up
- "Bee Sustainable" 2023
- United States Naval Academy STEM Seminar Scholarship winner 2019
- Code for Girls, app design for local animals shelter winner 2018

SKILLS

- Adobe Illustrator
- Adobe Photoshop
- Adobe InDesign
- Procreate
- AutoCAD
- Rhino + Grasshopper
- Enscape
- Gardening
- Community engagement skills
- Teaching + Public Speaking
- Writing
- Illustration
- Spanish